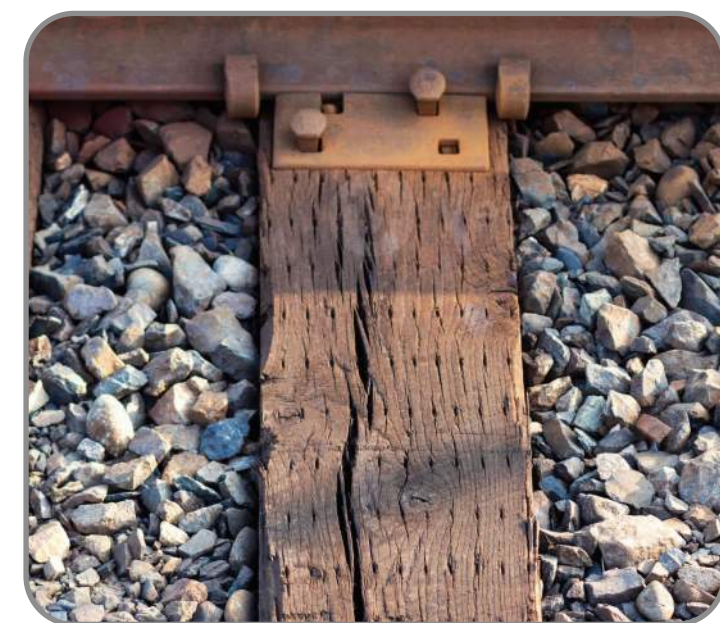


HISTORIC VILLAGE OF ZIONSVILLE

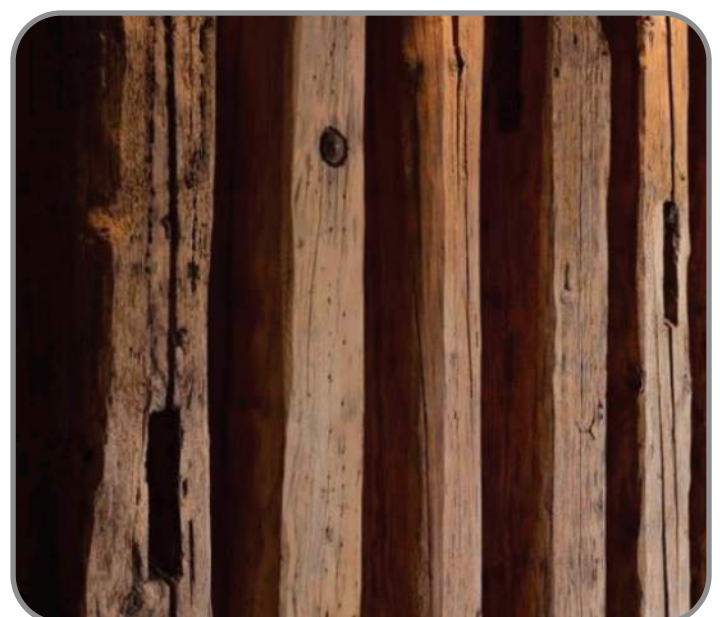
CONCEPT SIGNAGE EXPLORATIONS

01 Rail CONCEPT 01



- CONCEPT IDEAS:
- + Storied Steel
 - + Rail Timbers
 - + Historic Mill Stonework
 - + Horizontal Prairie Form

02 Village Grid CONCEPT 02



- CONCEPT IDEAS:
- + Main Street Brick
 - + Village Plat Grid
 - + Historic Mill Stonework
 - + Rail Timbers

01

02



Please provide your input!
Write your comments on a post-it note and place on the board below the corresponding concept.

HISTORIC VILLAGE OF ZIONSVILLE

CONCEPT SIGNAGE EXPLORATIONS

03 Early Settlement

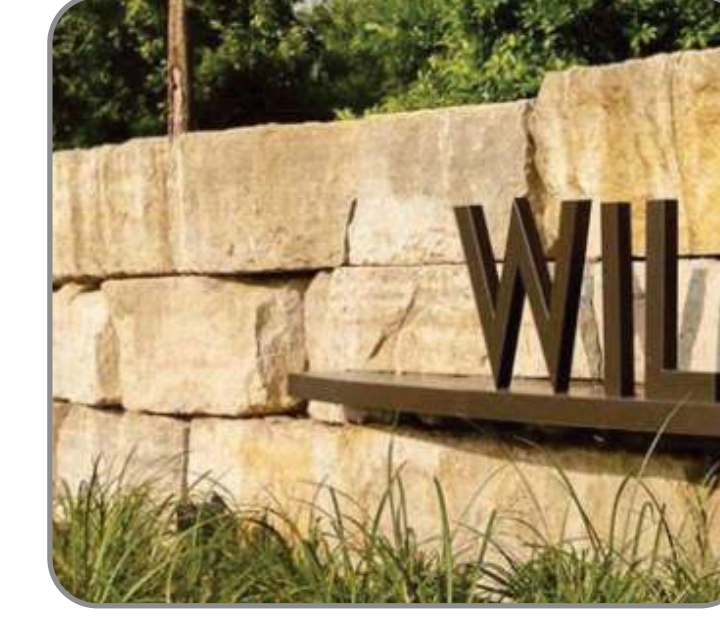
CONCEPT 03



- CONCEPT IDEAS:
- + Creek Flow Edges
 - + Early Agrarian Stonework
 - + Natural Materials
 - + Rail Timbers

04 Creek Bedrock

CONCEPT 04



- CONCEPT IDEAS:
- + Natural Limestone Blocks
 - + Refined Brick Ledge
 - + Creek Bed Outcropping

03

04



Please provide your input!

Write your comments on a post-it note and place on the board below the corresponding concept.

HISTORIC VILLAGE OF ZIONSVILLE

ENTRY EXPERIENCE - CONCEPTS

KEY MAP



A CONCEPT SECTION - SOUTH MAIN STREET



B CONCEPT SECTION - SOUTH MAIN STREET

