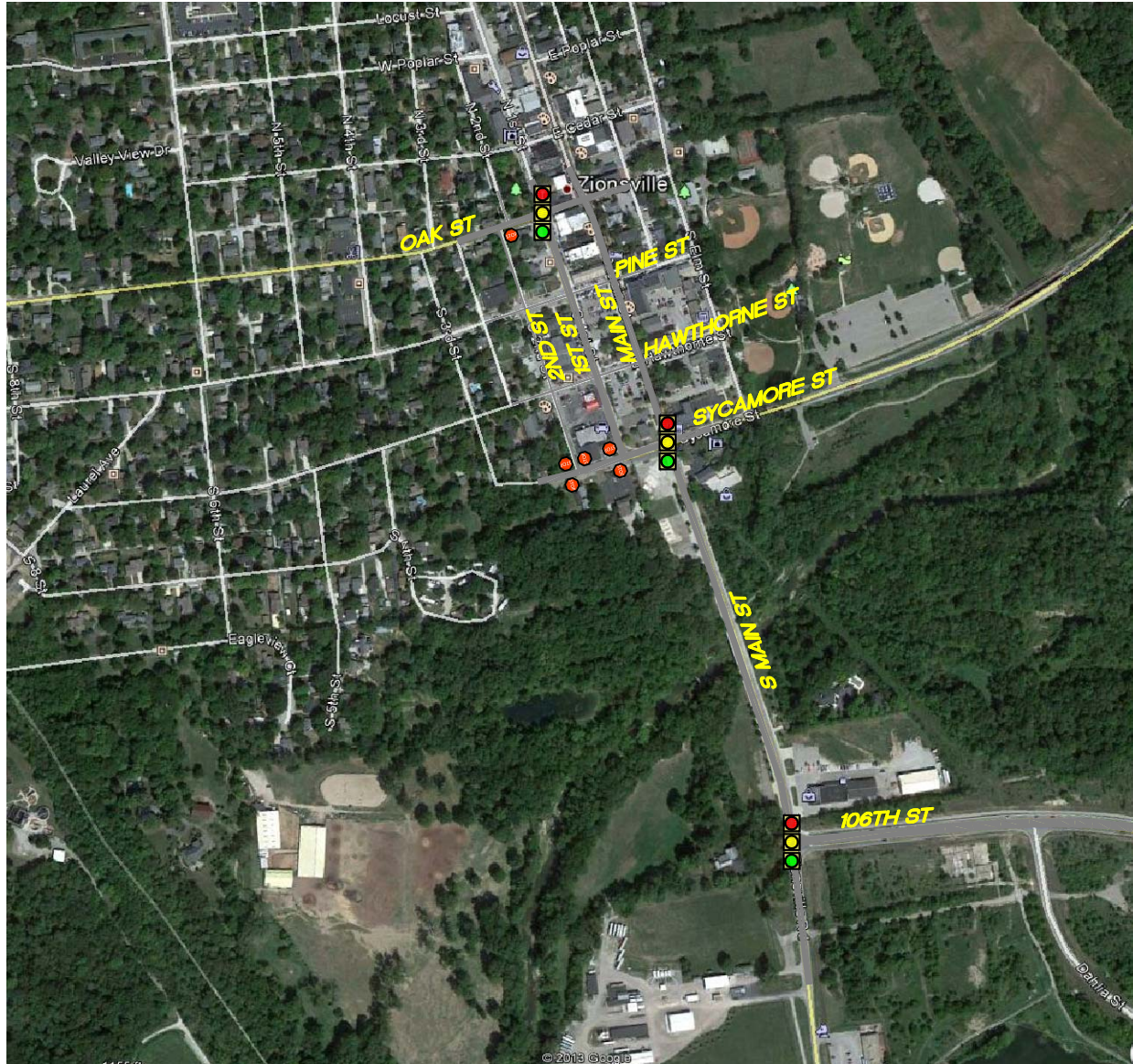


LEGEND

-  SIGNAL CONTROLLED INTERSECTION
-  STOP SIGN CONTROLLED INTERSECTION

FIGURE 2
SCENARIO 1
(EXISTING CONDITIONS)

CORRIDOR STUDY
ZIONSVILLE, IN

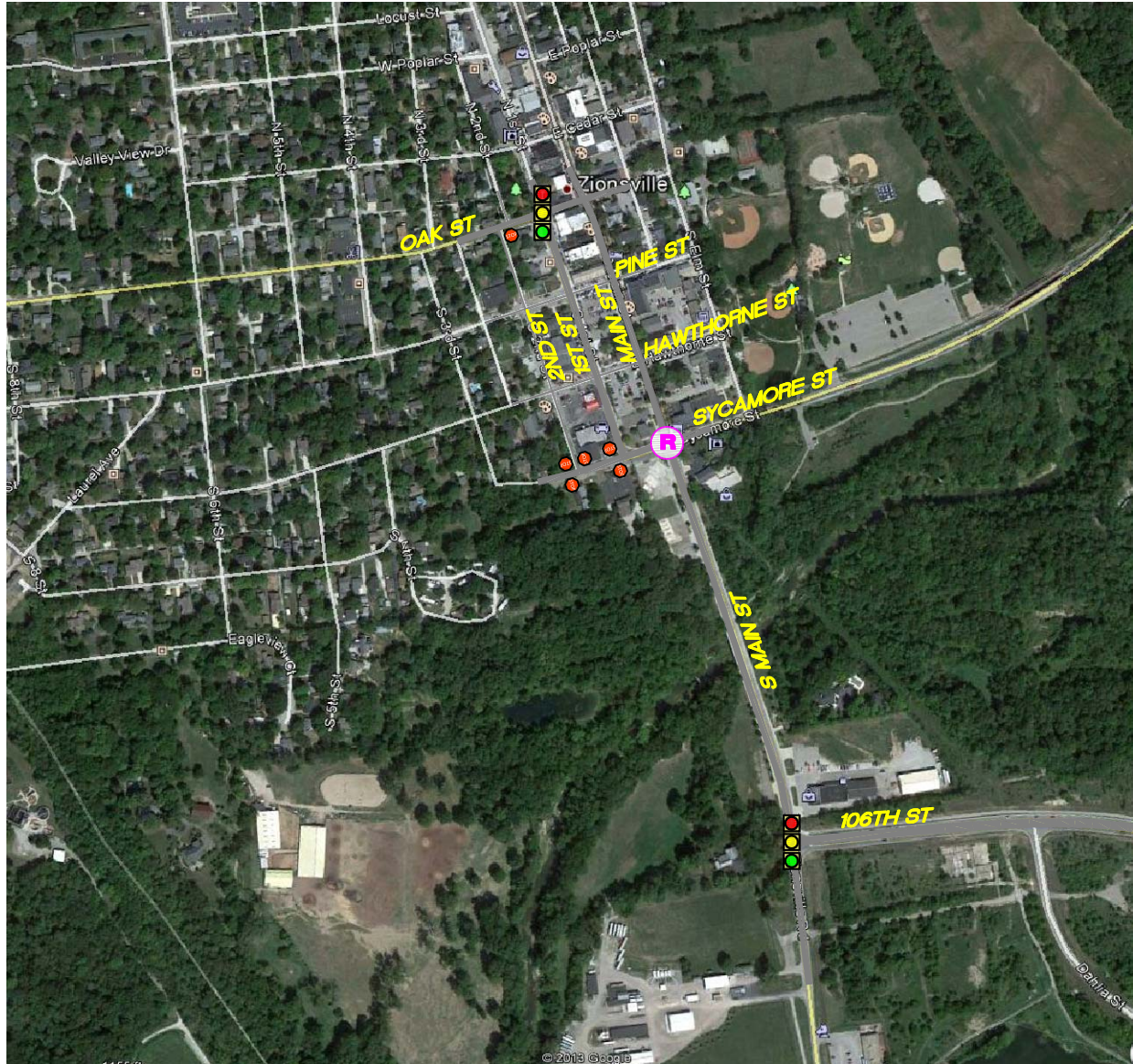


LEGEND

-  SIGNAL CONTROLLED INTERSECTION
-  STOP SIGN CONTROLLED INTERSECTION

FIGURE 3
SCENARIO 2
MODEL A

CORRIDOR STUDY
ZIONSVILLE, IN

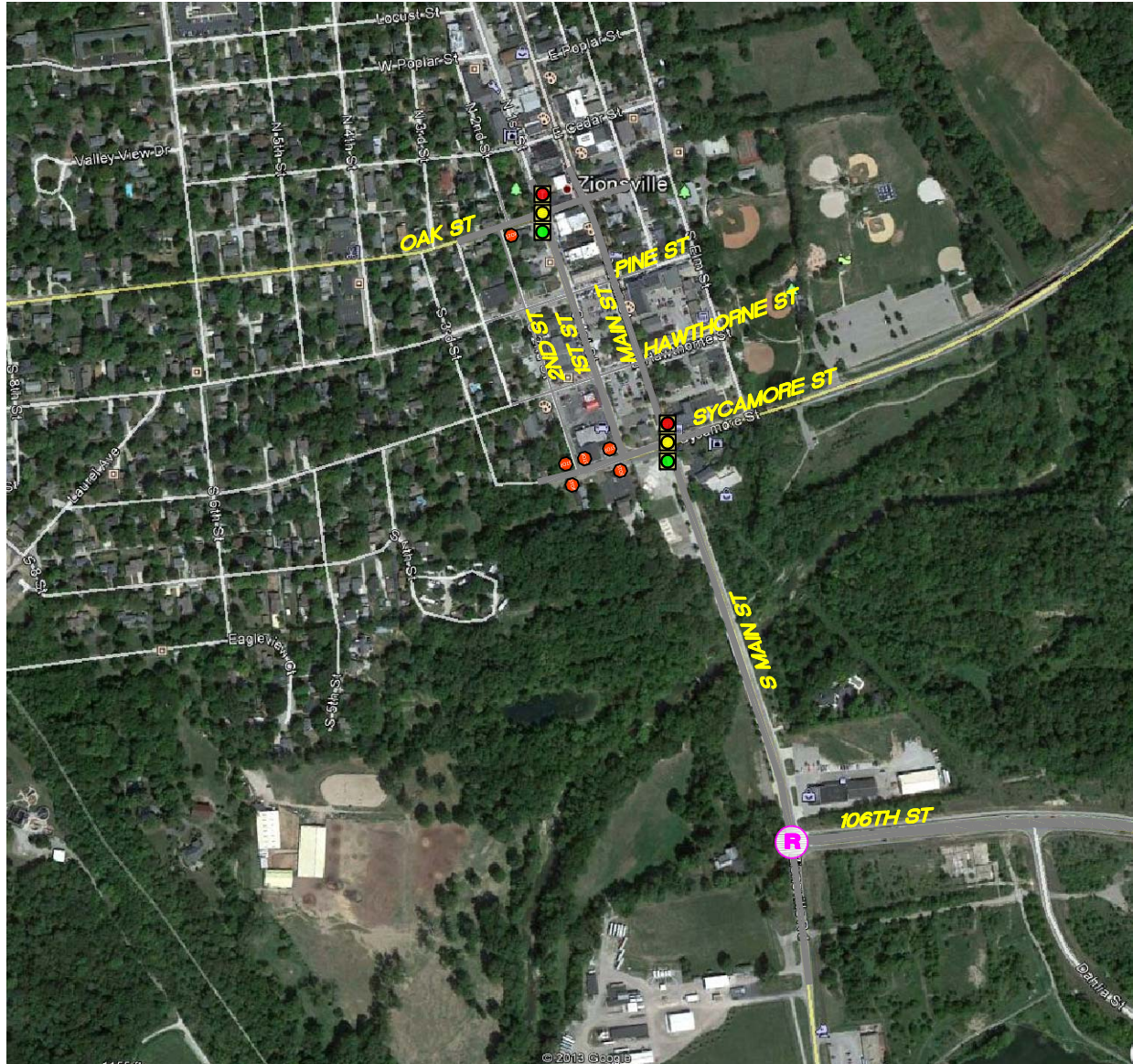


LEGEND

-  SIGNAL CONTROLLED INTERSECTION
-  STOP SIGN CONTROLLED INTERSECTION
-  ROUNDABOUT

FIGURE 4
SCENARIO 2
MODEL B

CORRIDOR STUDY
ZIONSVILLE, IN

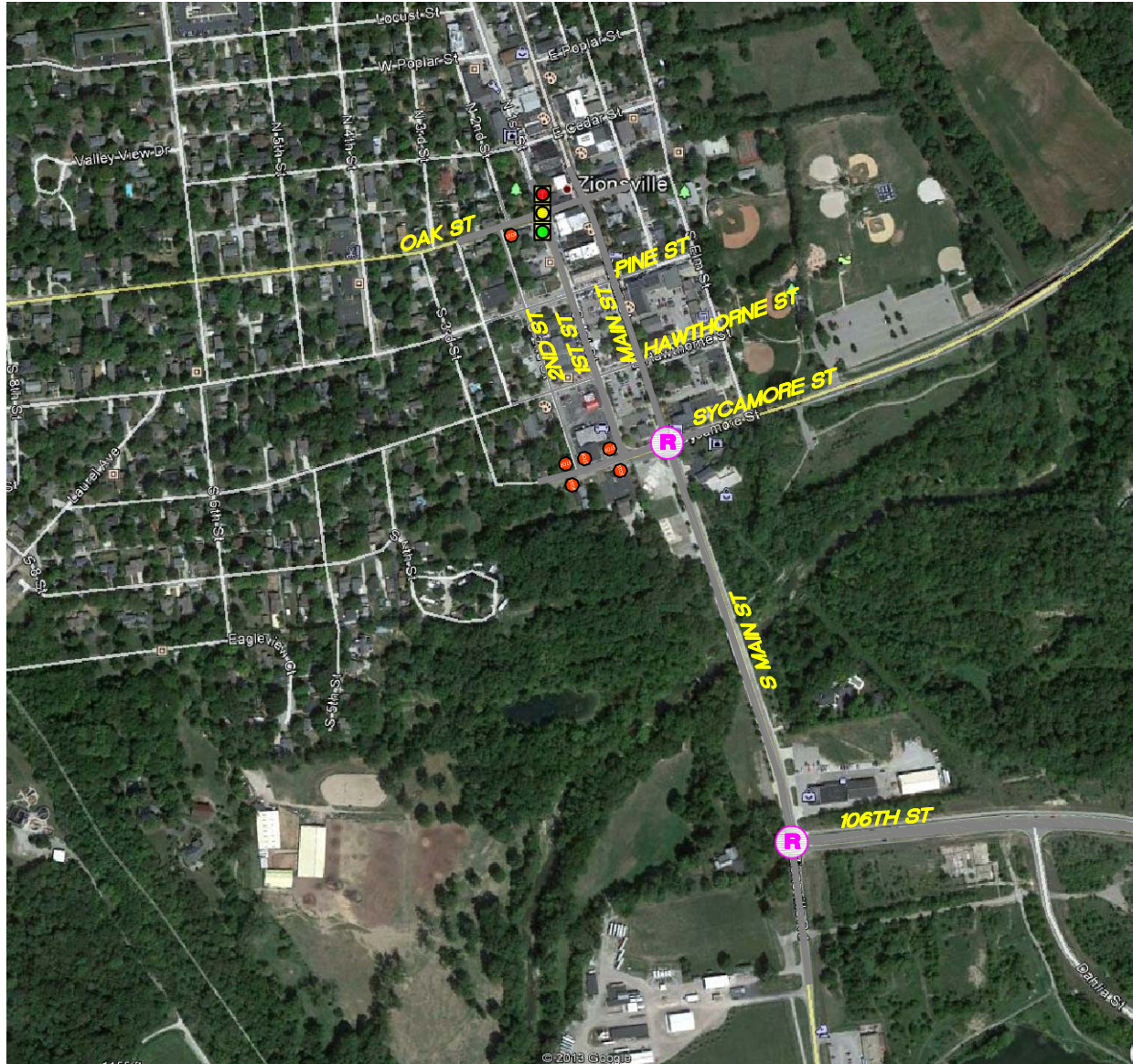


LEGEND

-  SIGNAL CONTROLLED INTERSECTION
-  STOP SIGN CONTROLLED INTERSECTION

FIGURE 5
SCENARIO 2
MODEL C

CORRIDOR STUDY
ZIONSVILLE, IN

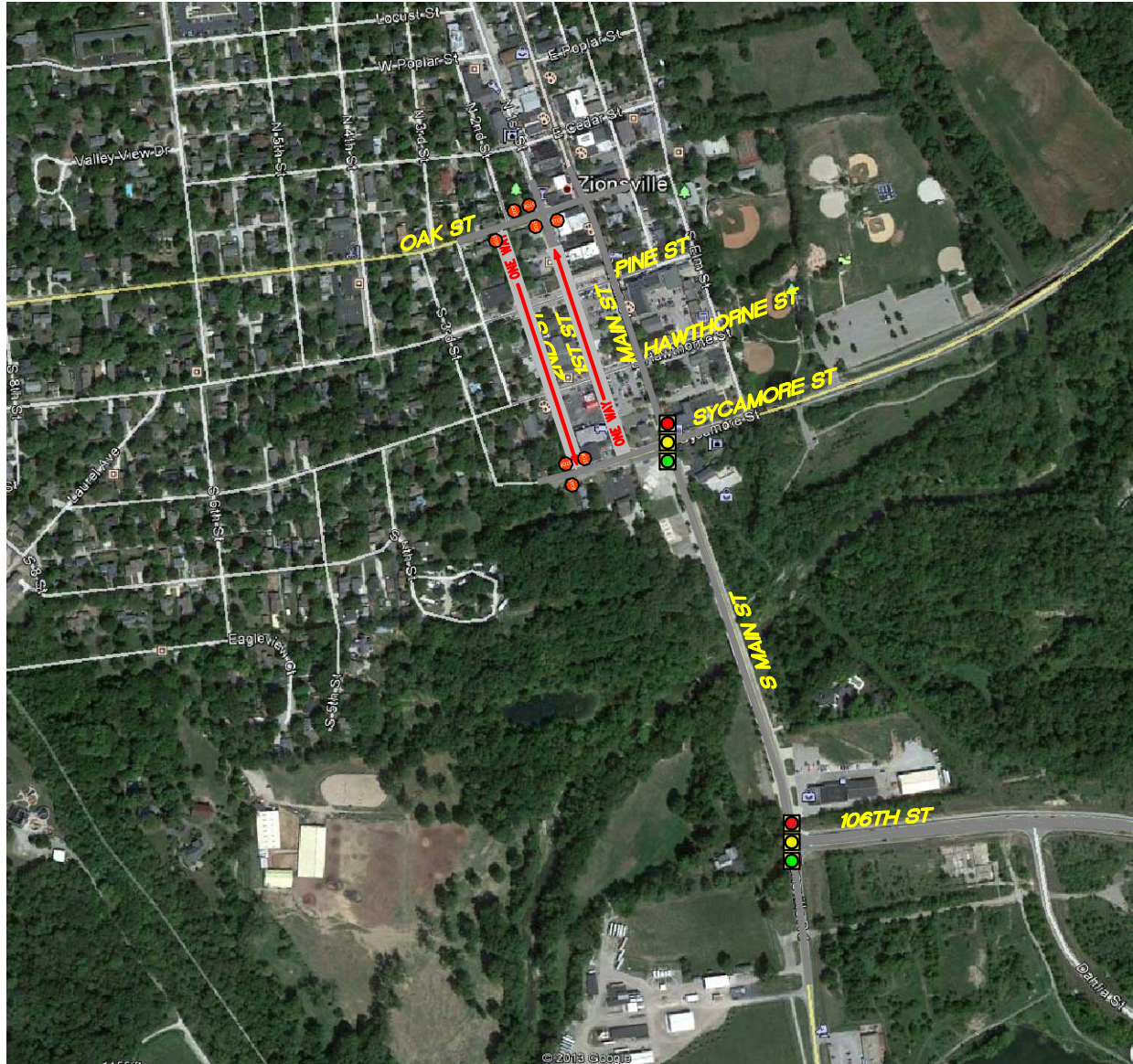


LEGEND

-  SIGNAL CONTROLLED INTERSECTION
-  STOP SIGN CONTROLLED INTERSECTION
-  ROUNDABOUT

FIGURE 6
SCENARIO 2
MODEL D

CORRIDOR STUDY
ZIONSVILLE, IN



LEGEND



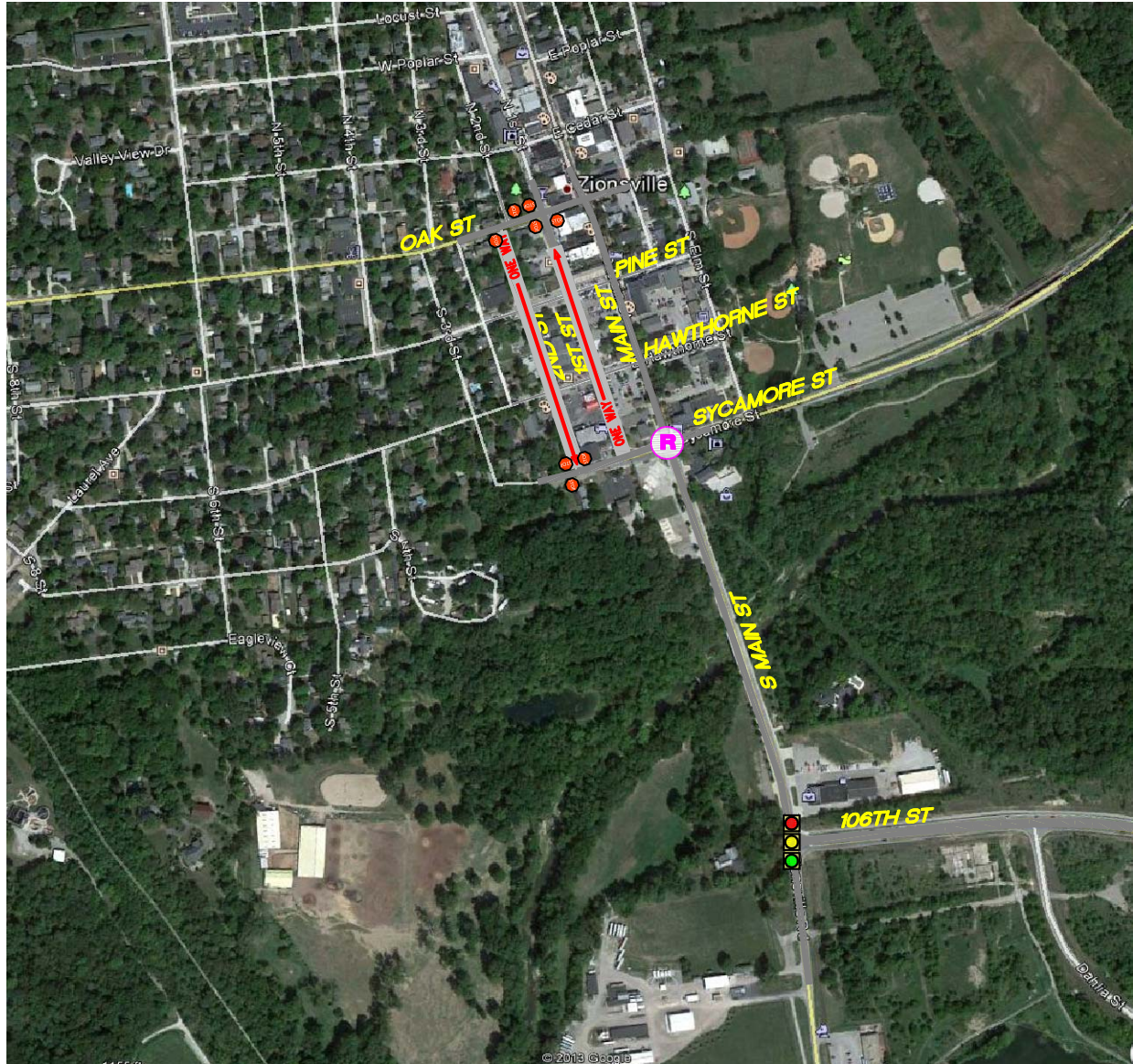
-  SIGNAL CONTROLLED INTERSECTION
-  STOP SIGN CONTROLLED INTERSECTION

FIGURE 7
SCENARIO 3
MODEL A

CORRIDOR STUDY
ZIONSVILLE, IN

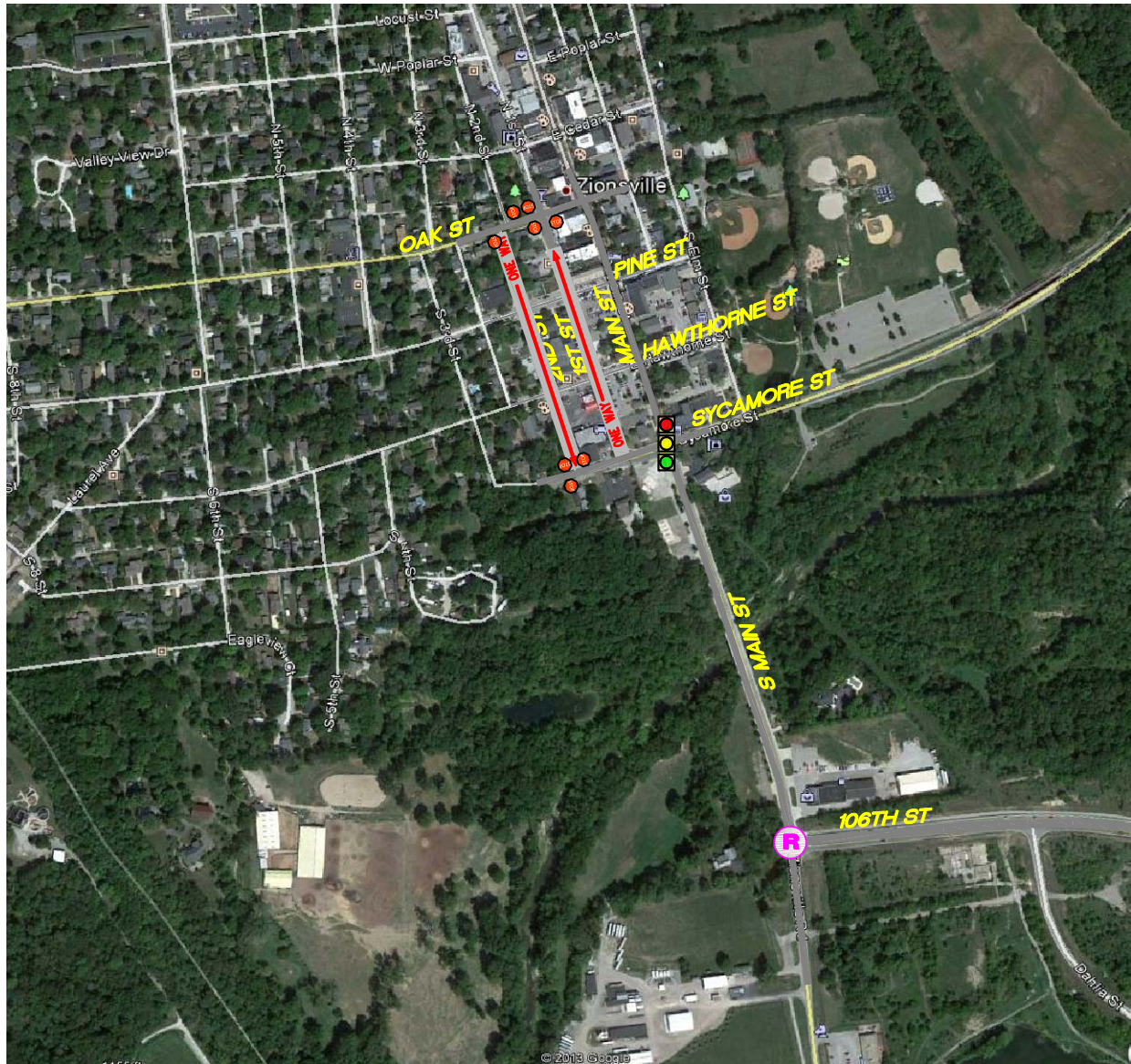


LEGEND

-  SIGNAL CONTROLLED INTERSECTION
-  STOP SIGN CONTROLLED INTERSECTION
-  ROUNDABOUT

FIGURE 8
SCENARIO 3
MODEL B

CORRIDOR STUDY
ZIONSVILLE, IN

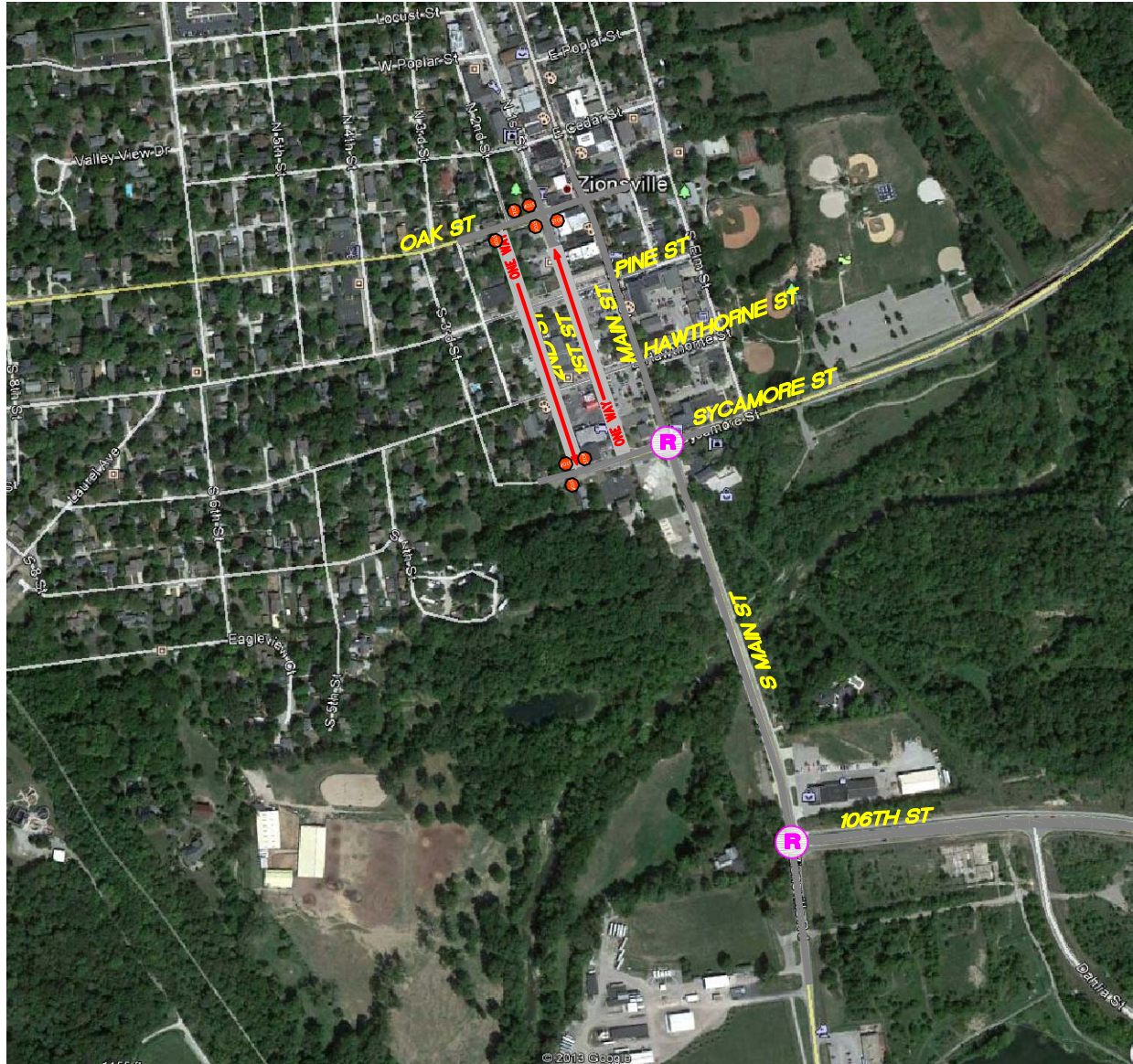


LEGEND

-  SIGNAL CONTROLLED INTERSECTION
-  STOP SIGN CONTROLLED INTERSECTION
-  ROUNDABOUT

FIGURE 9
SCENARIO 3
MODEL C

CORRIDOR STUDY
ZIONSVILLE, IN



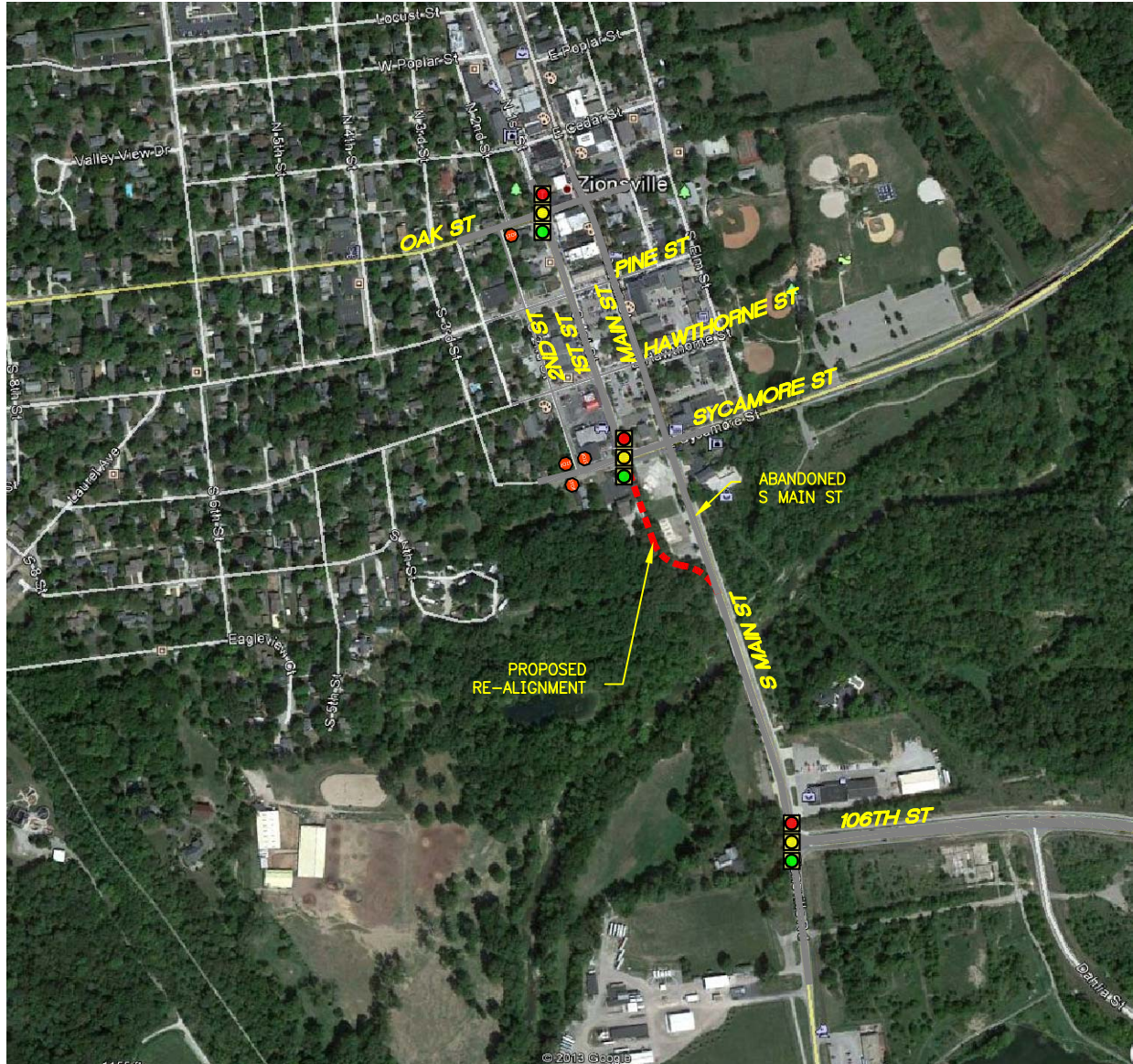
LEGEND

-  STOP SIGN CONTROLLED INTERSECTION
-  ROUNDABOUT

FIGURE 10

**SCENARIO 3
 MODEL D**

**CORRIDOR STUDY
 ZIONSVILLE, IN**



LEGEND


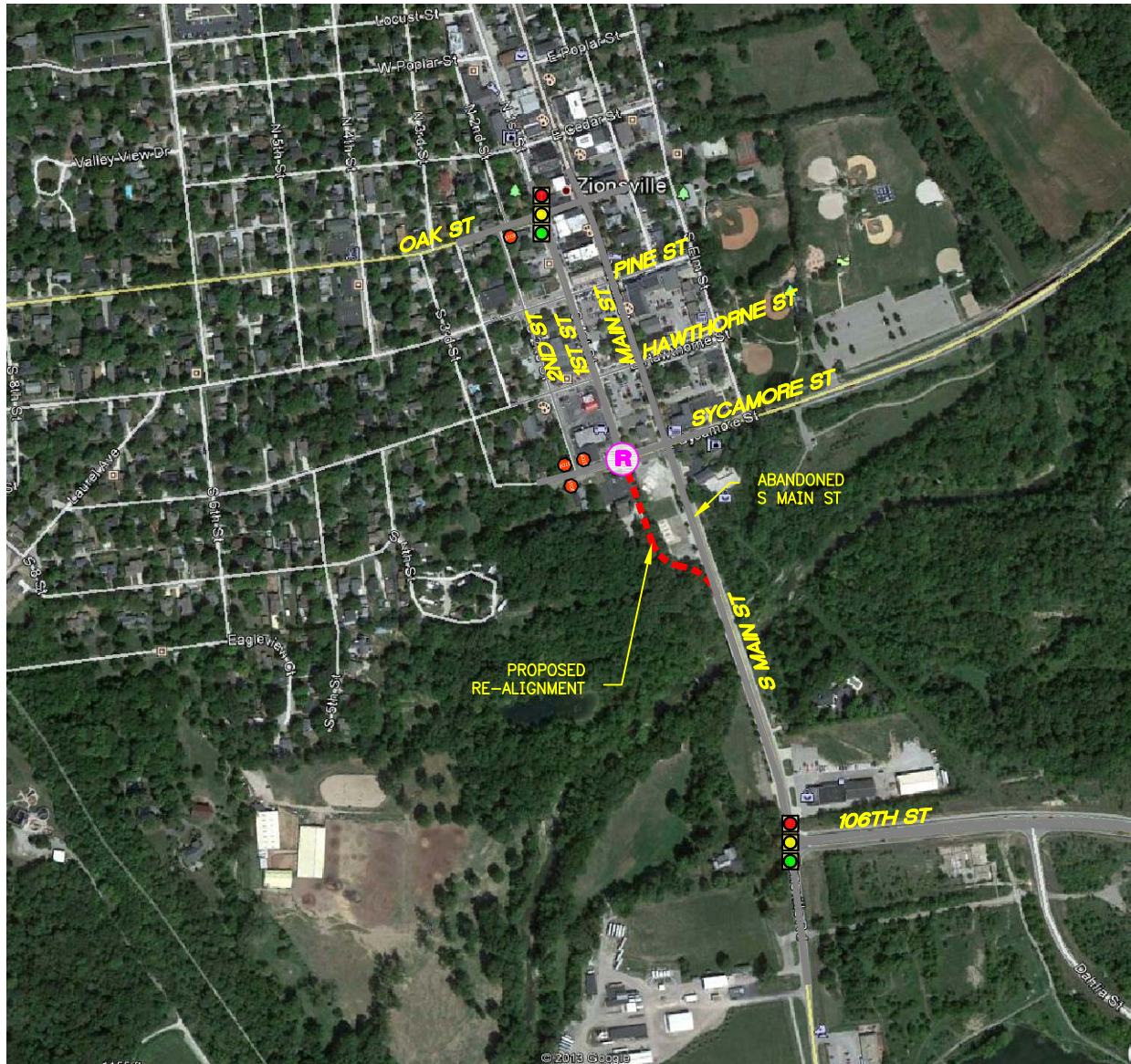
-  SIGNAL CONTROLLED INTERSECTION
-  PROPOSED RE-ALIGNMENT

FIGURE 11
SCENARIO 4
MODEL A

CORRIDOR STUDY
ZIONSVILLE, IN



LEGEND



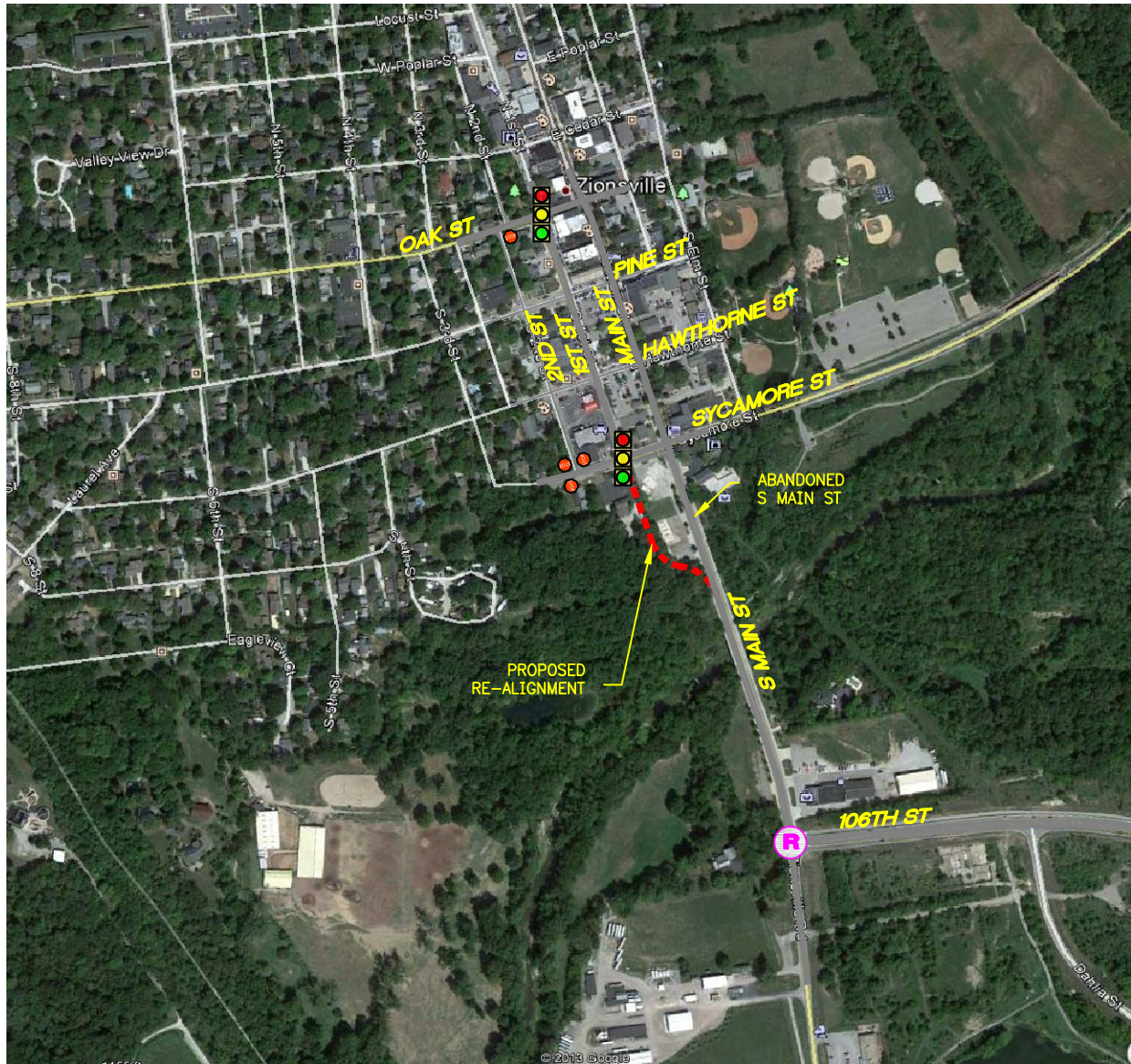
-  SIGNAL CONTROLLED INTERSECTION
-  ROUNDABOUT
-  PROPOSED RE-ALIGNMENT

FIGURE 12
SCENARIO 4
MODEL B

CORRIDOR STUDY
ZIONSVILLE, IN



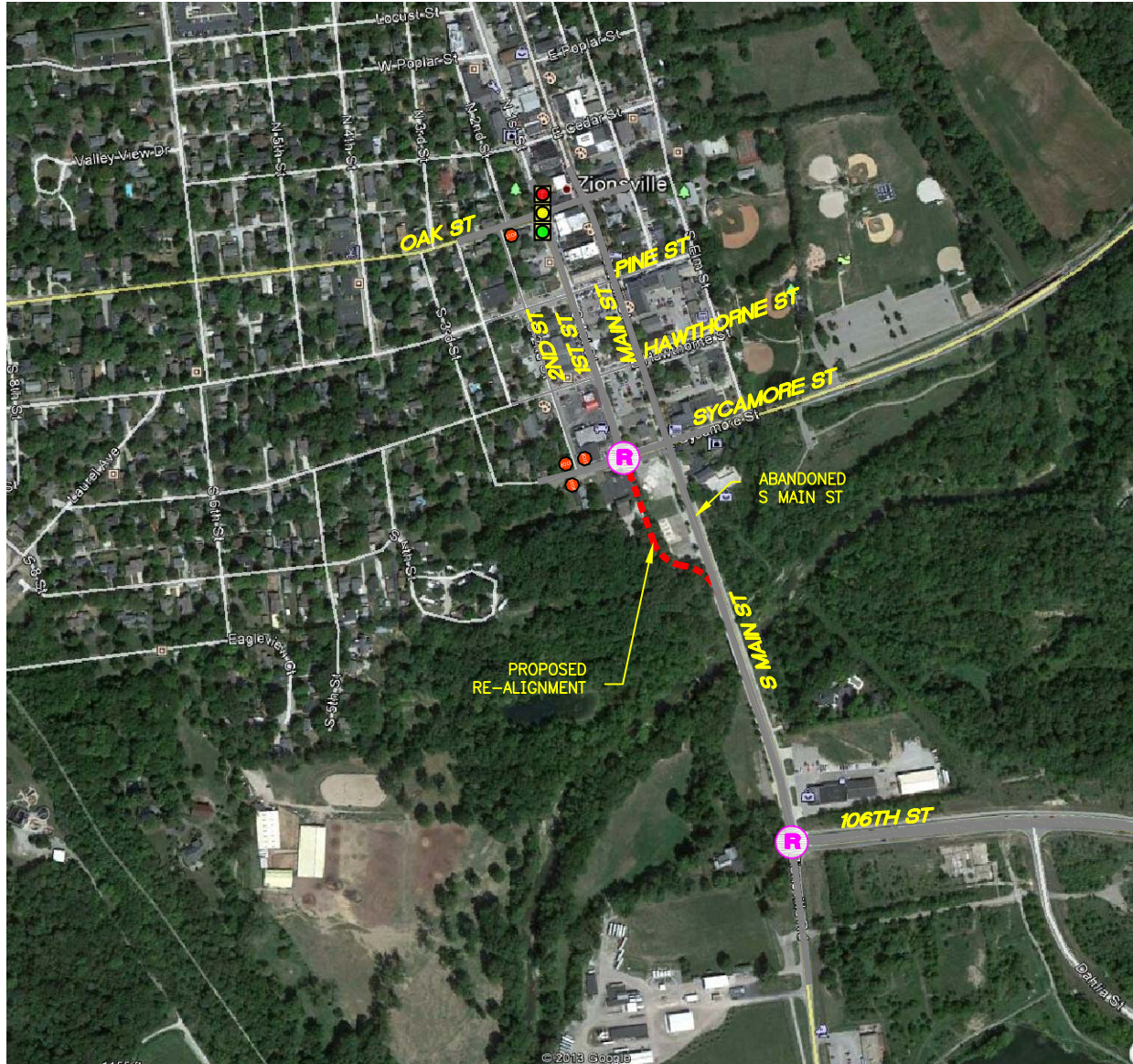
LEGEND

-  SIGNAL CONTROLLED INTERSECTION
-  PROPOSED RE-ALIGNMENT

FIGURE 13

**SCENARIO 4
 MODEL C**

**CORRIDOR STUDY
 ZIONSVILLE, IN**



LEGEND




-  SIGNAL CONTROLLED INTERSECTION
-  ROUNDABOUT
-  PROPOSED RE-ALIGNMENT

FIGURE 14
SCENARIO 4
MODEL D

CORRIDOR STUDY
ZIONSVILLE, IN



LEGEND
 XX = A.M. PEAK HOUR
 (XX) = P.M. PEAK HOUR
 * = NEGLIGIBLE

FIGURE 15
EXISTING TRAFFIC VOLUMES

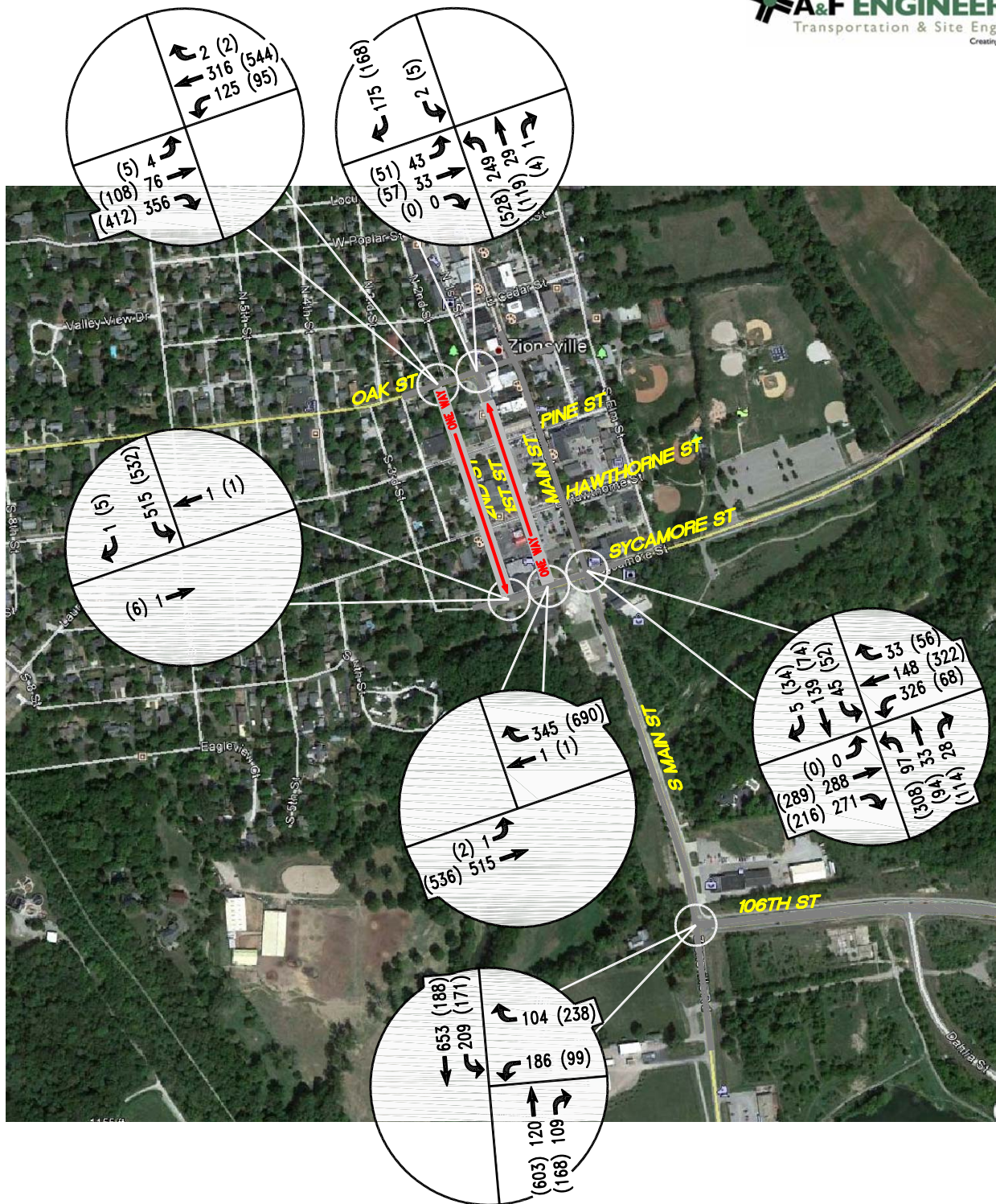
CORRIDOR STUDY
ZIONSVILLE, IN



LEGEND
 XX = A.M. PEAK HOUR
 (XX) = P.M. PEAK HOUR
 * = NEGLIGIBLE

FIGURE 16
PROJECTED TRAFFIC VOLUMES
(20-YEAR)

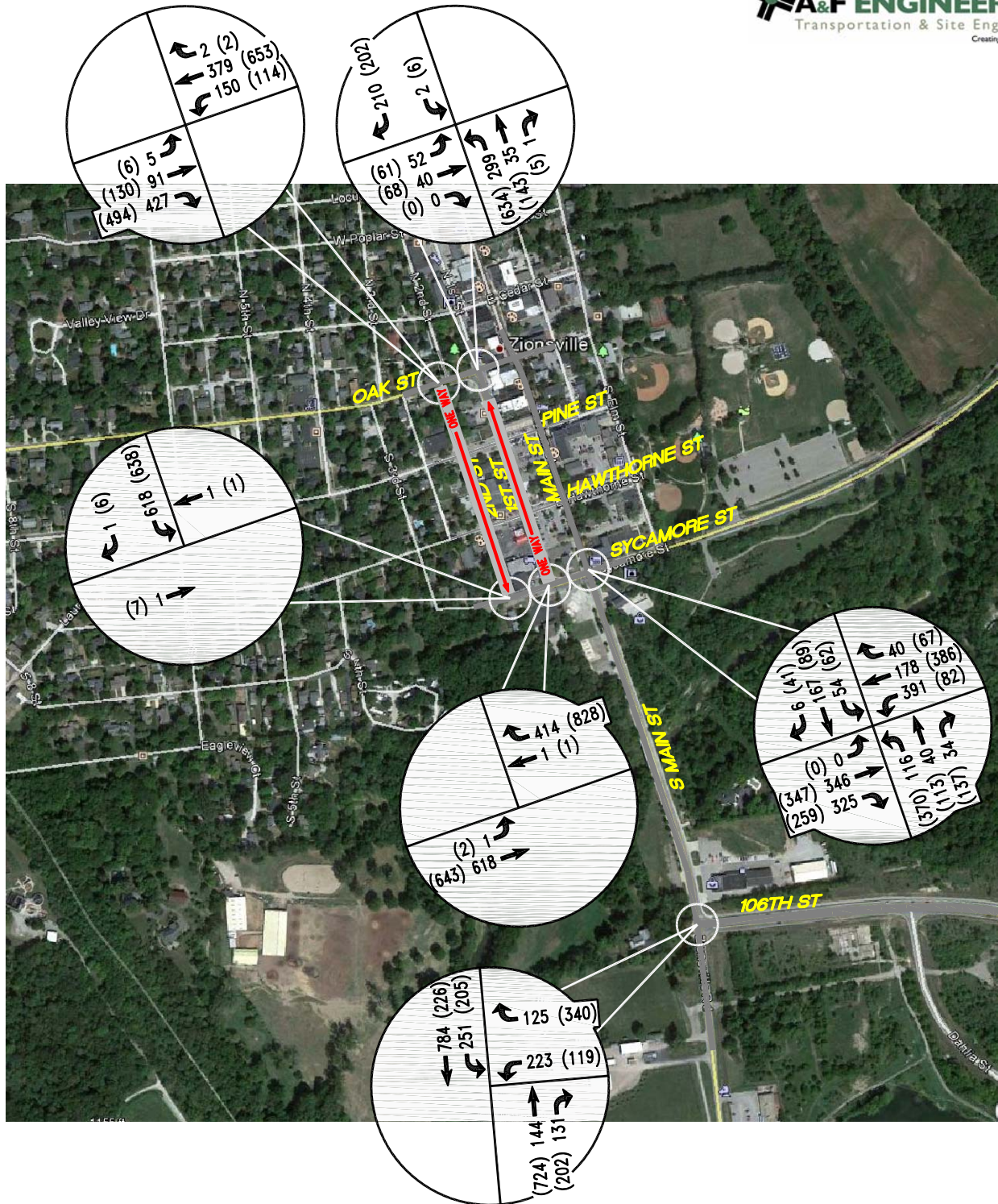
CORRIDOR STUDY
ZIONSVILLE, IN



LEGEND
 XX = A.M. PEAK HOUR
 (XX) = P.M. PEAK HOUR
 * = NEGLIGIBLE

FIGURE 17
(ONE-WAY) EXISTING
TRAFFIC VOLUMES

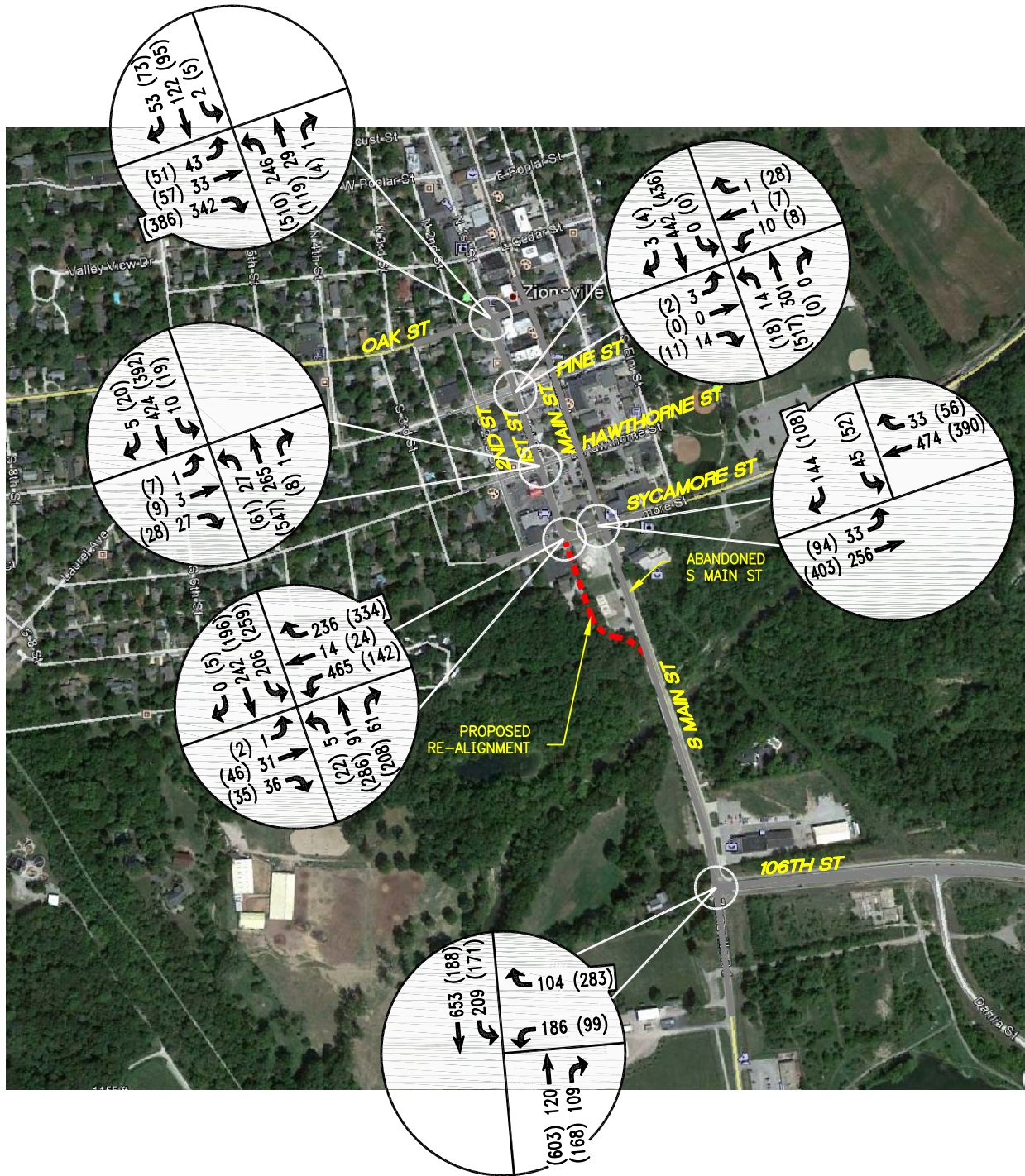
CORRIDOR STUDY
ZIONSVILLE, IN



LEGEND
 XX = A.M. PEAK HOUR
 (XX) = P.M. PEAK HOUR
 * = NEGLIGIBLE

FIGURE 18
(ONE-WAY) PROJECTED
TRAFFIC VOLUMES
(20-YEAR)

CORRIDOR STUDY
ZIONSVILLE, IN



LEGEND
 XX = A.M. PEAK HOUR
 (XX) = P.M. PEAK HOUR
 * = NEGLIGIBLE

FIGURE 19
(REALIGNMENT) EXISTING TRAFFIC VOLUMES

**CORRIDOR STUDY
 ZIONSVILLE, IN**

